

# Milford Central School

**Mark Place, Superintendent**

PO Box 237 • West Main Street

Milford, NY 13807-0237

Telephone (607) 286-3341 or 3349 | FAX (607) 286-7879



## MCS WEEKLY UPDATE

WEEK ENDING 10/26/2018

Each week I write an email to the faculty, staff and Board of Education to update them on the events of the last week and to keep them “in the loop” on important issues that impact MCS. In order to foster even greater communication and transparency for the great work that is done at MCS, I will be sending a weekly update out to the larger Milford community to keep you “in the loop” as well. Here is my update for the week ending 10/26/2018:

### **HALLOWEEN**

As in the past, we will be allowing students to dress up for Halloween on Wednesday, October 31st. In order to guarantee the safety of all of our students PreK – 12, the guidelines for costumes will be as follows:

- No masks or facial coverings that prevent us from being able to identify a student.
- No props that could be considered a weapon (guns, knives, swords, cleavers, etc.).
- Avoid costumes depicting extreme violence (gore, blood, guts, etc.).

### **WORKFORCE SUMMIT**

On Wednesday (10/24), I attended the Workforce Summit that was organized by the Otsego County Chamber of Commerce and Senator Seward's Office. The Summit brought together over 75 leaders from a wide range of organizations in Otsego County. The purpose was to share information about how to best recruit and retain workers. I had the privilege of being able to present on the strategies that MCS is employing to attract employees and the steps we are taking to provide liveable wages and affordable insurance. It was a very productive meeting, and the next steps include a campaign to get people to come back to Otsego County to live and work.

### **BOARD-EMPLOYEE LIAISON COMMITTEE**

At last evening's Board Meeting, the Board re-established the Board-Employee Liaison Committee. The Board's charge for the Committee is attached, and the Board has established that the purpose of the Committee is to:

- Discuss items of mutual interest and concern between a school board and its employees.
- Act as a sounding board for ideas when the school board is developing policies on educational matters or on matters affecting the working conditions of employees.

The Board will begin holding Liaison Committee meetings starting in December and will invite one employee group each meeting to engage in a conversation. Each side will put forward a topic for discussion which will be known to each side a week in advance of the meeting. The Board is very much looking forward to beginning these conversations.

**CATSKILL SYMPHONY ORCHESTRA---FREE TICKETS!**

The Catskill Symphony Orchestra is offering FREE tickets to their "Music Matters" program featuring cellist Lucas Button. The concert is being held on Sunday, November 4, 2018. Attached is the flyer which contains the contact information for the free tickets. This is a great opportunity for parents and grandparents!

**FIELD TRIPS**

This week we had two field trips take place. Attached you will find a short summary of the field trips along with photos from each. Thank you to everyone who is taking the time to plan such great experiences for our students.

**FIELD TRIP OPPORTUNITY**

Attached you will find a flyer for the Roberson Museum & Science Center in Binghamton. They have programs for grades K-12 for art, science, and social studies. This may be a great opportunity for families to also explore with their children.

Have a great weekend!

Mark

# MUSIC MATTERS!



The Catskill Symphony Orchestra has a very generous donor who gives

**FREE TICKETS TO CHILDREN**

**AND THE ADULTS WHO BRING THEM TO OUR CONCERTS.**

**Join us on Sunday, November 4, 2018, 4:00 p.m.**

Hunt Union Ballroom, SUNY Oneonta



This concert features

A VERY TALENTED CELLIST

**LUCAS BUTTON**

**Call 607/436-2670 TO RESERVE YOUR FREE TICKETS**

catskill *Symphony* Orchestra

**DR. TIMOTHY PERRY**

**GUEST CONDUCTOR**



# Catskill Symphony Orchestra

## Field Trip

The 4th and 5th grades attended a live music concert! On Wednesday, October 24th, they attended the Catskill Symphony Orchestra's Annual Youth Concert. For many students, this was a first. So very exciting for them to experience the Arts and they were on their best behavior!

The concert consisted of:

- "Young Person's Guide to the Orchestra" by Benjamin Britten. During this performance, the kids learned to recognize the instruments of the orchestra by sight and sound.
- "Pumpkin Eater's Little Fugue" by Robert McBride. They learned what a fugue is and how it is similar to the rounds they have been learning about in class.
- "Night on Bald Mountain" by Modest Mussorgsky. In addition to this performance, they heard the story of the song it portrays.
- "Stars and Stripes Forever" by John Philip Sousa. Philip Sousa, according to Ms. Bridgers, is the most famous American composer of marches!

Congratulations on another successful adventure!



# Leadership Conference Field Trip

On Thursday, October 25, 2018, 9 eighth grade students were invited to participate in the Student Leadership Workshop hosted by SUNY Oneonta. This event, which is led in part by students, encourages students to recognize and seek to correct injustice in their world. Representing MCS as one of the Student Directors was none other than Andrew White. It was a great event for all participating MCS students.





**HOW TO SCHEDULE**

Roberson programs are offered 12 months a year. Reservations are suggested at least four weeks in advance to ensure availability and the best educational experience.

For more information and/or to schedule a visit to Roberson, contact Programming Coordinator Laura Sacco (607) 772-0660, ext. 262 or toll free (888) 269-5325, ext. 262.

Please verify details of your confirmation two weeks prior to your visit.

**COST**

Prices: \$225-\$250/group of a maximum of 25 students. Prices vary for planetarium shows. Programs include one, two, or three different activities and last approximately 2 ½ hours. Planetarium shows can be booked separately for \$150/group of a maximum of 25 students (\$6.00/student extra up to a group maximum of 50).

Teachers and chaperones are admitted free of charge at a ratio of one adult to ten students. Additional adults will need to pay regular group admission (\$7.00).

**ADDITIONAL INFO**

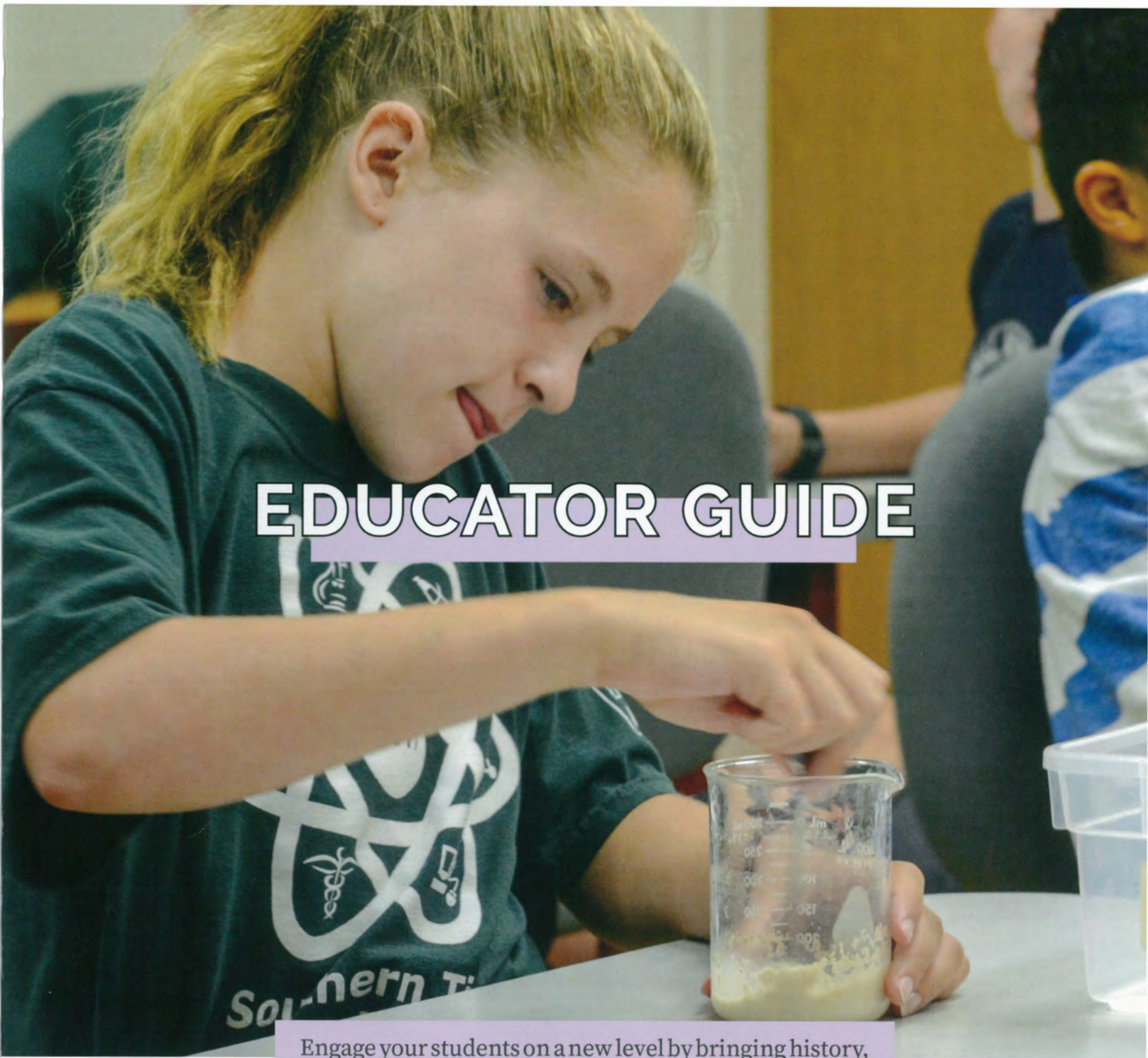
Roberson can provide an area for students to eat their own bag lunches. Please pack lunches in boxes or coolers so they can be transported easily. Weather permitting, picnic areas are available.

For a list of BOCES programs, refer to the Broome-Tioga BOCES Services Guide available from your superintendent. Required BOCES units must be purchased through BOCES prior to booking.

**DOWNLOAD A DETAILED PROGRAM GUIDE AT  
ROBERSON.ORG/EDUCATION**



All educators receive 20% off a membership to Roberson Museum and Science Center.



**EDUCATOR GUIDE**

Engage your students on a new level by bringing history, art, and science to life through dynamic, hands-on exhibits and programming. Make our museum and science center a part of your classroom.



**ROBERSON.ORG**



## PROGRAMS



### PLANETARIUM EXPLORATION GRADE K - 12

Our digital planetarium allows students an up close and personal journey through our solar system. Open a window to another world of future exploration and challenges for humanity.

### ART PROGRAMS GRADES K - 12

Inspire your students through a number of Roberson's permanent and temporary exhibitions and collections. Using critical thinking skills, students may interpret works of art, explore their own aesthetic in the studio, or sketch in the galleries. Art speaks to our culture and ideals—what will these pieces say to your class?

### HOME FOR THE HOLIDAYS ON VIEW NOV 14 - JAN 6 GRADES K - 12

Join us in this seasonal celebration, featuring hundreds of elaborately decorated trees, dazzling Holiday displays, and the International Forest. Take a tour of Roberson Mansion and check out our Holiday themed planetarium shows.

### OUTREACH PROGRAMS GRADES K - 8

Can't make it to Roberson? Bring Roberson to you! Our interactive outreach programs based in Science, History, and Art—complete with interactive learning experiences in each subject area.

**Cost: Mileage (.54/mile) + \$10 travel fee**

### INTERDISCIPLINARY PROGRAMS GRADES K - 12

This option is perfect for teachers who want to visit Roberson, but would like more flexibility in the programming. Build your own program once the school year begins. You can make individualized plans with Roberson, schedule visits, and integrate elements of museum programs into your curriculum. Roberson provides pre- and post-visit lesson plans. Please inquire for appropriate lesson suggestions.

**Booking and extended program guides available at [roberson.org/education](http://roberson.org/education)**

### HISTORY PROGRAMS GRADES 2 - 8

Explore our community's evolution from colonial times to the present. Dive into Broome County's rich past by choosing three out of the following hands-on programs: Haudenosaunee Culture, WWI, Endicott-Johnson Factory Assembly Line, Immigration, Edwin Link, and Broome County History. A planetarium show may be one of the programs.

### MYSTERY OF THE MONTH GRADES 2 - 8

Receive a mysterious artifact once a month (September-May) for your classroom. Artifacts range from tools to toys and relate to American History. Each shipment includes a teacher's guide and a context clue. This is a great way to get students excited about history through hands-on observation. **\$200 for nine months of shipments**

### STEAM BREAK CAMPS GRADES 2 - 12

Offered during Winter, Spring, and Summer breaks, our STEAM camps feature dynamic programs designed to keep kids curious while school's on break. All our camps are led by a team of experienced, talented, and certified educators.

### SCIENCE PROGRAMS GRADES 4 - 12

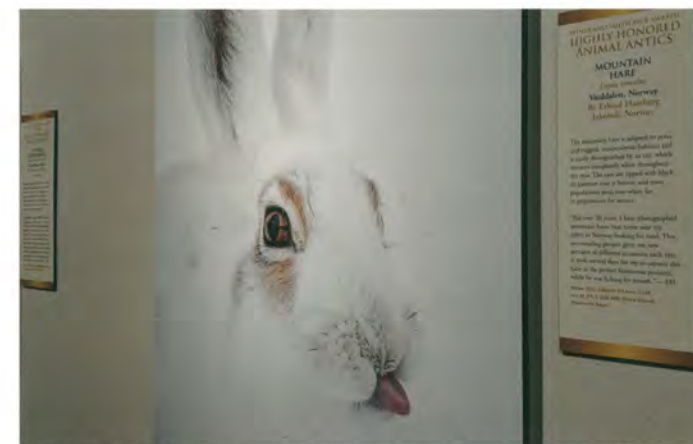
Your students will get an opportunity to apply what they've learned in the classroom with our science programs. They'll go hands-on with our Gel Electrophoresis program—tasked to solve a crime using forensic science; or see what lies beneath the surface when they explore the local ecology along the Chenango and Susquahanna rivers.



### ERA OF CHANGE ON VIEW OCT 26 - JUN 2020 GRADES 8 - 12

Go back to a time when women were beating down barrels of alcohol with hatchets and marching for the right to vote. Europe was at war and America was staying out of the fight, however pivotal events and propaganda were swaying popular opinion.

Era of Change spans three decades of American history, from 1910 - 1930. During these 30 years, America experienced dramatic change and we're still feeling the effects 100 years later.



### NATURE'S BEST PHOTOGRAPHY ON VIEW FEB - SUMMER 2019 GRADES PRE-K - 12

Up to 50 stunning prints are on display, complemented with pieces from our Loomis collection, which is comprised of dozens of animal specimens. Each photograph tells a story, whether it's about the species or the journey the photographer took to meet these creatures in their natural habitats.

### EDWIN LINK PERMANENT EXHIBIT GRADES 3 - 7

This exhibit includes examples of Link's amazing advancements as a pioneer in aviation, underwater archaeology, and submersibles.

## EXHIBITIONS



### PROPAGANDA: SELLING A WAR ON VIEW UNTIL OCT, BACK UP IN JAN GRADES 8 - 12

Explore the imagery and music that inspired a generation of Americans to take up arms in Europe during the first World War—The War to End All Wars. Browse through the Sawtelle Gallery and see compelling posters from this period and ask: how do they relate to what we see on social media today?

### ROBERSON MANSION PERMANENT EXHIBIT GRADES 2 - 12

Step back into the Gilded Age and walk through several floors of this historic mansion built by Alonzo and Margaret Roberson. This Italian Renaissance Revival style house had all of the modern conveniences of the time: elevator, gas and electric lighting, and central heat.



### NATURETREK PERMANENT EXHIBIT GRADES PRE-K - 12

Walk through the established deciduous and transitional forests, wetlands, meadow, and backyard habitats that abound in the Binghamton region. See nature, frozen in place, and take note of where these creatures reside. From an environmental standpoint, how have animals changed their patterns to avoid humans?



# **Board-Employee Liaison Committee**

## **Charge:**

The purpose of the Board-Employee Liaison is to:

- Discuss items of mutual interest and concern between a school board and its employees.
- Act as a sounding board for ideas when the school board is developing policies on educational matters or on matters affecting the working conditions of employees.

The Committee shall not deal with grievances nor discuss the modification of any Collective Bargaining Agreement or any other matter properly left to the normal collective bargaining process.

## **Objectives:**

The general objectives of the liaison committee are as follows:

- To improve employee/board relations.
- To contribute to a high level of morale in the school system.
- To improve the general efficiency of the school system.
- To provide effective and immediate two-way communication for the exchange of ideas and information pertaining to the operation of the educational system within the school district.
- To discuss education needs, trends and innovations and their instructional and administrative implications.
- To anticipate and deal with problems that may interfere with the effectiveness of the educational process.
- To be an effective mechanism for the discussion of issues of a local nature within the school district.

## **Agreements:**

Each side will be able to add one item to the agenda for each meeting.

The meetings will be limited to a maximum of one hour.

The agenda items will be presented no less than one week prior to the meeting to allow both sides the time to prepare.